



Wakefield SEND Service Directory

Information for schools



wakefieldcouncil

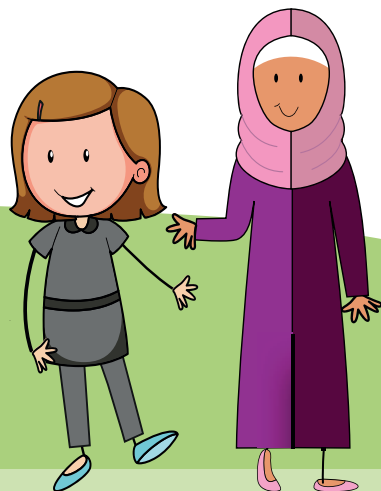
Introduction

This booklet details services available for schools to access support for children and young people with special educational needs.

Please note that this information is correct at the time of printing. You can find the latest information on:

- Wakefield Traded Services
tradedservices.wakefield.gov.uk
- Wakefield SEND Local Offer
wakefield.mylocaloffer.org

If you have any comments or suggestions about the information in this guide, please contact the SEND Development Team by email: send@wakefield.gov.uk



Contents

Need	Page number
Cognition & Learning	
Developmental Delay	16, 22, 46
Learning needs	16, 22, 46
Multiple Learning difficulties	16, 22, 46
Severe Learning difficulties	16, 22, 46
Communication & Interaction	
Autism	12, 16, 36, 40, 44, 46
Behavioural issues	12, 36, 46
Delayed Language Development	40
Speech, Language & Communication	12, 16, 40
Speech sound difficulties	40
Social interaction difficulties	12, 16, 40
Sensory/Physical Difficulties	
Deaf & Hearing impairment	10, 11, 38
Feeding difficulties	40
Multi-sensory	38

Contents

Need	Page number
Physical difficulties	6, 22, 42, 46
Visual impairment	8, 9, 38
Social, Emotional & Mental Health	
Anger issues	36
Anxiety issues	36
Bereavement & Loss	16, 36
Eating disorders	36
Emotional regulation	16, 36
Emotional wellbeing	16, 36
Low mood	16, 36
Other	
Complex medical needs	38, 42, 46
Developing independence & self esteem	30
English as an additional language	12
Friendship difficulties	30
Independent travel	24, 26
School attendance difficulties	20, 32

Education

In this section you will find information for the following services:

Service	Page number
Wakefield Inclusion Special Educational Needs & Disabilities Support Service (WISENDSS)	6-15
• Physical Difficulties Team	6-7
• Children's Sensory Impairment Team (CSIT) for Visual & Multi-Sensory	8-9
• Children's Sensory Impairment Team (CSIT) for Deaf & Hearing Impaired	10-11
• SEND Inclusion Advisory Team	12-13
• Early Years	14-15
Educational Psychology Service	16-17
Wakefield Educational Improvement Teachers	18-19
Wakefield Education Therapy Team	20-21
Wakefield Portage Service	22-23
Home to School Transport Team	24-25
Independent Travel Training	26-27
SEN Assessment and Review Team (SENART)	28-29
Preparing for Adulthood Team	30-31
Education Welfare Service	32-33

Education

Wakefield Inclusion Special Educational Needs & Disabilities Support Service (WISENDSS)

Physical Difficulties Team

The Physical Difficulties Team consists of an Advisory Teacher, Occupational Therapist and Senior Specialist Support Officer within WISENDSS. The team provides support to educational settings in meeting the needs of children and young people who have a Physical Difficulty.

The team work closely with colleagues in Health and supports educational settings to meet the needs of children and young people who have a physical difficulty that are struggling to access the curriculum, move safely or require specialist equipment.

The team work with educational settings to identify pupil need, set outcomes, and advise them of the appropriate strategies and interventions to minimise barriers to learning arising from physical difficulty.

Advice and training is offered to settings for areas such as - reasonable adjustments, building adaptations, use of specialist equipment and ensuring safe moving and handling techniques with the aim of improving access and inclusion for all pupils.

How To Access The Service:

Referrals are often made directly by medical professionals however we do accept referrals from schools.

Schools can contact their named WISENDSS inclusion/advisory teacher at **WISENDSS@wakefield.gov.uk**

Schools need to gain permission from families to share their child's details with professionals and to be able to contact WISENDSS. Schools then complete the referral form and return to **WISENDSS@wakefield.gov.uk**. Professionals will then work alongside schools to support the child in overcoming barriers to their education.

Children and young people do not need to have an EHCP for the Physical Difficulties team to work with them.

Pupil Age Range: 0 to 25

Contact details:

Email: **WISENDSS@wakefield.gov.uk**

Education

Wakefield Inclusion Special Educational Needs & Disabilities Support Service (WISENDSS)

Children's Sensory Impairment Team (CSIT) for Visual & Multi-Sensory

The Children's Sensory Impairment Team consists of Advisory Teachers, Specialist Support Staff and Habilitation Officers within WISENDSS. The team provide services to visually impaired and multi-sensory impaired children and young people within their educational settings.

All children and young people should be able to thrive, be happy, healthy, and to achieve their potential in their educational setting. This can be achieved through collaboration with local schools and other agencies to understand the specific needs of each locality and offer swift targeted early intervention and support.

The Vision Impairment Team supports settings to identify pupil need, set outcomes and advise on appropriate strategies. Staff may deliver direct time-limited interventions with the expectation that settings continue these strategies.

Training is offered to settings allowing them to develop staff knowledge and skills to better support pupils with vision impairment.

How To Access The Service:

CSIT referrals are generally made via medical professionals. Schools can contact for advice about a referral if a pupil is not already known to the service.

Schools can contact their named WISENDSS inclusion/advisory teacher at **WISENDSS@wakefield.gov.uk**

Schools need to gain permission from families to share their child's details with professionals and to be able to contact WISENDSS. Schools then complete the referral form and return to **WISENDSS@wakefield.gov.uk**. Professionals will then work alongside schools to support the child in overcoming barriers to their education.

Children and young people do not need to have an EHCP for the Vision Impairment team to work with them.

Pupil Age Range: 0 to 25

Contact details:

Email: **WISENDSS@wakefield.gov.uk**

Education Services

Wakefield Inclusion Special Educational Needs & Disabilities Support Service (WISENDSS)

Children's Sensory Impairment Team (CSIT) for Deaf & Hearing Impaired

Advice from the Deaf and Hearing Impaired Team is provided to settings on how they can make reasonable adjustments, implement appropriate strategies and use equipment to improve access and inclusion for all pupils.

Staff deliver direct time-limited interventions with the expectation that settings continue these strategies. Training is offered to settings allowing them to develop staff knowledge and skills to better support pupils with hearing loss.

The Educational Audiologist plays a key role in ensuring effective multi-professional, multi-agency cooperation between Health and Education. They work with Audiology departments to ensure children and young people receive the most appropriate assessment and amplification.



How To Access The Service:

CSIT referrals are generally made via medical professionals. Schools can contact for advice about a referral if a pupil is not already known to the service.

Schools can contact their named WISENDSS inclusion/advisory teacher at **WISENDSS@wakefield.gov.uk**

Schools need to gain permission from families to share their child's details with professionals and to be able to contact WISENDSS. Schools then complete the referral form and return to **WISENDSS@wakefield.gov.uk**. Professionals will then work alongside schools to support the child in overcoming barriers to their education.

Children and young people do not need to have an EHCP for the Deaf and Hearing Impaired Team to work with them.

Pupil Age Range: 0 to 25

Contact details:

Email: **WISENDSS@wakefield.gov.uk**

Education

Wakefield Inclusion Special Educational Needs & Disabilities Support Service (WISENDSS)

SEND Inclusion Advisory Team

The SEND Inclusion Advisory Team are specialist teachers. The team support in reducing the barriers to mainstream education, and work with a wide range of needs - Autism, Speech Language and Communication needs (SLCN), Social Emotional and Mental Health (SEMH) and learning.

The team are committed to offering support and training at an individual, departmental or whole school level.

WISENDS Connect

The WISENDSS connect is a telephone hotline available Tuesday - Friday (9am-4pm) during term time. The service provides support to parents with school related queries. It sign posts information to parents for wider services to parents for wider services as well as informing parents of support available from the WISENDSS team.

English as an Additional Language (EAL)

The Inclusion/Advisory Teacher for EAL provides training, support and advice for children who have English as an Additional Language to help boost pupils' achievement.

All schools can access a free consultation to discuss the specific needs of their EAL pupils and how to raise achievement for those groups of learners. Additional traded packages of bespoke training and teaching are available to suit the needs of schools and children.

How To Access The Service:

Schools can contact their named WISENDSS inclusion/advisory teacher at **WISENDSS@wakefield.gov.uk**

Schools need to gain permission from families to share their child's details with professionals and to be able to contact WISENDSS. Schools then complete the referral form and return to **WISENDSS@wakefield.gov.uk**. Professionals will then work alongside schools to support the child in overcoming barriers to their education.

Pupil Age Range: 0 to 25

Contact details:

Email: **WISENDSS@wakefield.gov.uk**

WISENDSS Connect: **07585 880778** (Tuesday-Thursday term time only)

Education

Wakefield Inclusion Special Educational Needs & Disabilities Support Service (WISENDSS)

Early Years

About us: The Early Years staff within WISENDSS offer support at an individual or whole setting level to enhance and respond to SEND issues with young people. The service works to ensure all settings:

- Are provided with the skills and expertise from EY staff to implement a graduated response to SEND, aiding the provision, strategies and interventions which promotes inclusion.
- Provide a multi-agency approach through the TAEY (Team around the Early Years) agenda as well as the TAS (Team around the School).
- Use the consultation and referral process to identify individuals that require a graduated response in supporting their special educational needs.

For maintained nursery settings, EY staff will work with your Central Advisory Teacher to liaise with the SENCO and support SEND in school.



How To Access The Service:

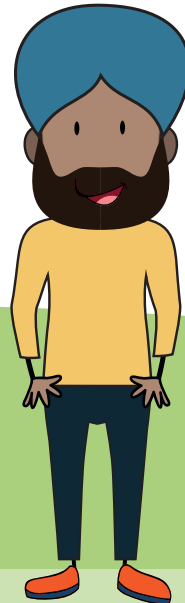
The Central Advisory Teacher (school based nursery) – Staff will use the planning meeting process or consultation meeting to work with the setting to identify pupils needing a varying level of support. The work will be in collaboration with the central lead teacher.

The link Area SENCO (non-maintained PVI/childminder) – Staff will offer planning meetings or await request for involvement to work with the setting in identification of pupils needing a varying level of support.

Pupil Age Range: 0 to 25

Contact details:

Email: EYSEND@wakefield.gov.uk



Education

Wakefield Educational Psychology Service (EPS)

Support the service offer:

The EP team can offer input and support on a wide range of concerns impacting on a young person's engagement with, and success within, education. This might be within the areas of cognition and learning, communication and interaction and/or social emotional and mental health need.

The work of EPs supports schools to effectively identify and respond to the needs of individuals through a graduated 'assess-plan-do-review' process in order to improve progress, promote well-being and support inclusion.

Statutory Duties

The EPS undertake psychological advice as part of the statutory Education Health and Care needs assessment process. We also contribute towards annual reviews of Education Health and Care Plan (EHCPs) particularly where there are significant changes in the young person's needs and/or the provisions required to meet these, or at phase transfer reviews. EPs may contribute professional advice and opinion as part of the SEND tribunal process.

Critical Incident Support

In the event of a critical incident or other major event impacting on the school community, the EPS can offer advice and support to the Local Authority or to individual educational settings. The nature of the support offered will be determined.

This may include advice on how staff can best support students and each other, advice on communication with parents / carers and the wider community, and identifying and planning support for staff and student who may be particularly affected by the incident. We aim to be flexible and responsive to the needs of the educational setting and ensure that any intervention is least intrusive but most effective.

Pupil Age Range: 0 to 25

How to access the service:

Educational settings within Wakefield have the option of purchasing a Service Level Agreement with the EPS to meet their specific needs and priorities. All work is negotiated and agreed with the educational setting through planning meetings.

Contact details:

Email: EYSEND@wakefield.gov.uk

Telephone: **01924 307403**

Education

Wakefield Educational Improvement Teachers (EITs)

The Educational Improvement Teachers (EITs) are part of the Education, Inclusion and Assessment Service for children and young people in Wakefield. The Team work alongside the district's Family Hubs.

The team consists of Teachers (EITs) who work with children and young people from 0-25 years, providing educational support and challenge to professionals, children, young people and their families across Early Help.

What is an Educational Improvement Teacher (EIT)?

EITs use professional knowledge of the education system to advocate for vulnerable children and young people in school. The team provide education support to help children and young people with issues that are beginning to affect their education.

All EITs are qualified teachers and share extensive experiences of teaching in school from foundation stage to secondary age.

The Work of an EIT in School

EITs have many ways of working to help children in school. These include:

- Working with children/ young people to obtain their child/ young person's voice.
- Liaising with staff in schools, to share a child's/ young person's voice.
- Contributing the child/ young person's voice to support plans in school and/or CFH meetings.

Pupil Age Range: 0 to 25

How to access the service:

Where there is active CFH Practitioner involvement, the CFH Practitioner might ask for an EIT to be involved when impartial support for a child/young person's difficulties and worries is required, where this is impacting on their behaviour in school or their access to education.

If you would like more information about the team of the Educational Improvement Teachers, please contact:

Educational Psychology Service (EPS)

Telephone: **01924 307403**

Email: eps@wakefield.gov.uk

Education

Wakefield Education Therapy Team

The Education Therapy Team are part of the Wakefield Educational Psychology Service, providing support to children and young people across the Wakefield district who are receiving fixed term exclusions, or who are at risk of exclusion from mainstream education.

Education Therapy Team use professional knowledge to support vulnerable children and young people in schools.

ETT intervention may include:

- Individual therapeutic support for children and young people in schools.
- Non-judgmental advice and guidance for parents and schools.
- Strengthening child/parent and school relationships.
- Signposting to specialist services for further help and support.
- Assisting school professionals in developing understanding and knowledge of the child's social and emotional needs.
- Liaison with professionals (where appropriate) throughout the intervention period.

Pupil Age Range: 0 to 25

How to access the service:

Primary and Secondary schools Headteachers can make a request for Education Therapy Team involvement by completing a 'Request for Support' form (by contacting inclusionpanels@wakefield.gov.uk) and submitting directly to the Inclusion Panels, Wakefield, for their cluster area.

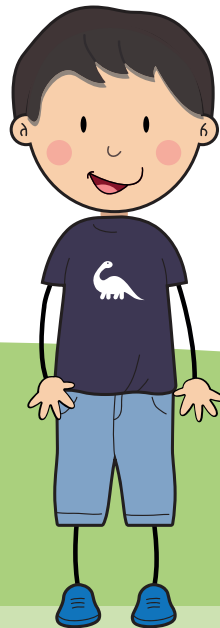
Contact details:

If you would like more information about the team of the Educational Improvement Teachers, please contact:

Educational Psychology Service (EPS)

Telephone: **01924 307403**

Email: eps@wakefield.gov.uk



Education

Wakefield Portage Service

Portage is a service within the Early Years Foundation Stage for children with additional needs.

It is a home teaching service for pre-school children who show some degree of developmental delay. The children may have learning or physical needs because of a specific condition or there may be no obvious reason to explain why they learn more slowly.

The Service helps parents to teach their own children in their own homes with support from a trained home visitor who visits the family on a weekly basis.

The UK National Portage Association website can be found at:

www.portage.org.uk

During Portage Involvement:

Portage Home Visitors have many ways of working to help children.

The emphasis is on sessions being enjoyable. This involves:

Assessment of what the child can already do using an appropriate checklist as a guide.

Creating a teaching plan, tailored to the individual child and what the parents want their child to learn.

During the weekly visit the home visitor will demonstrate how to teach the skill, as well as how to observe and record the child's progress.

A teaching activity for the week will then be written down clearly on an Activity Chart.

The parents will try out the teaching activity during the home visit and will then spend a short period of time every day for the next week teaching the child.

The child's progress will be discussed with the home visitor during the next visit and the next step in the teaching programme planned.

Pupil Age Range: From birth to 3 and a half years

How to access the service:

If you know of a family who would benefit from receiving Portage or would like further details about the Service please contact:

Educational Psychology Service (EPS)

Telephone: **01924 307403**

Email: eps@wakefield.gov.uk

Education

Home to School Transport Team

The main purpose of school transport is to assist in enabling pupils to attend school.

Free Home to school transport is available for children:

- Under the age of 8 who live more than 2 miles* from the nearest qualifying primary school to their home. Free travel at the 2 mile limit will only apply upto the end of term in which the child becomes 8, after that a 3 mile* limit will apply;
- Aged between 8 and 16 years (or children up to and including Year 11) who travel 3 miles* or more to their nearest qualifying school;
- Aged between 8 and 11 who are entitled to receive free school meals or whose parents are in receipt of the maximum level of Working Tax Credit if they go to the nearest qualifying school to their home and live more than 2 miles from that school;

- Aged between 11 and 16 (ie. Years 7 to 11 inclusive) who are entitled to receive free school meals or whose parents are in receipt of the maximum level of Working Tax Credit if they attend one of their 3 nearest qualifying schools which are more than 2 miles but less than 6 miles from home;

In addition, we may also be able to help with transport arrangements for:

- Children who are unable to walk to school because of their special educational needs/disability or mobility issue;
- Children who are unable to walk in safety to school (accompanied as necessary) because of the nature of the route; and
- Young children with disabled parents who cannot accompany them on their journeys between home and school.

Contact details:

For further details please contact the **Home to School Transport Team** on (01924 305643 / 305675 / 306980 / 305481 / 306784 / 305663) or email: [**hst@wakefield.gov.uk**](mailto:hst@wakefield.gov.uk)

Education

Independent Travel Training

Independent Travel Training is a travel training programme designed to run in a school or college.

The Travel Training Team primarily work with students in receipt of an Education, Health and Care Plan in Years 10 and 11 usually on 'Assisted Transport'.

The training aims to equip young people with the skills needed to travel to and from school or college by themselves on public transport.

It can be better to start training young people sooner as part of the child's education with Years 7-9, as it promotes wider travel choice for a much longer period and reduces long term demand on specialist transport.

Parents and carers are often fearful that travel training will place their child in danger by exposing them to the outside world. The Travel Training Team works hard to allay these fears by visiting parents at home and by keeping them fully informed of what the training will consist of at any given time.

Travel training has the following benefits:

- The students no longer need escorting to places
- The parents gain more respite time to do their own thing e.g. study or employment
- Broadens the horizon of the learner away from the family
- Travel Training changes family roles in a positive manner as it changes the way they interact with one another.
- Overall increased confidence and independence for transition into adulthood

Contact details:

Further information contact the **Independent Travel Team** on 01924 306348 or the **Home to School Transport Team** on 01924305643 / 305675 / 306980 / 305481/306784/305663) or email: hst@wakefield.gov.uk



Education

SEN Assessment and Review Team (SENART)

SENART are the team responsible for the implementation and maintenance of Education, Health and Care Plans (EHCP).

What is an EHCP

An Education, Health and Care Plan (EHCP) is a single multi-agency plan for children and young people aged 0-25 who have Special Educational Needs or Disabilities.

An EHCP will be put in place where a greater level of individual help is needed to ensure that a child/young person makes progress. It will be put in place following an assessment of the child or young person's education, health and care needs (not just educational needs). It is designed to make sure that all the child/young person's needs are assessed and supported at the same time.

The EHCP is a statutory legal document. Its preparation is informed by the guidance outlined in the Special Educational Needs and Disability Code of Practice: 0-25 years. This code covers provision for children and young people from birth to 25 years.

When to request an EHC needs assessment

Where, despite the setting having taken relevant and purposeful action to identify, assess and meet the special educational needs of the child/young person from within their existing resources (SEN support) and they have not made adequate progress, a request for an EHC assessment can be made. This involves a multi-agency assessment of the child's needs.

Who can request an EHC needs assessment

The following people have a specific right to request a statutory assessment for an EHC Plan:

- The child's parent (or advocate on their behalf),
- The young person over the age of 16 (or advocate on their behalf),
- A person acting on behalf of a school or post 16 institution (this should be with the knowledge and agreement of the child/ young person and their family)

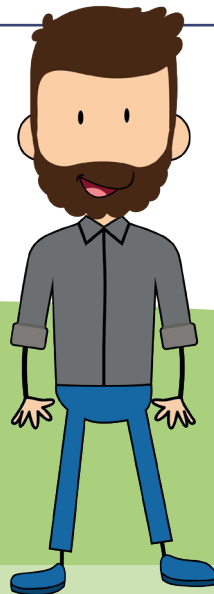
For further information:

Contact the **SENART Team**:

Email: SENART@wakefield.gov.uk

Telephone: **01924 302465**

SENART, Block C, Normanton Town Hall, High Street, Normanton WF6 2DZ



Education

Preparing for Adulthood Team

The Preparing for Adulthood (PfA) Team work to improve the 4 PfA outcomes for all SEND students from the earliest years. This is with the view of supporting SEND young people into further education and employment in line with their interests and aspirations.

4 key outcomes

Preparing for Adulthood is a key element of the (2015) Special educational needs and disability Code of Practice: 0 to 25 years

The reforms in 2015 aimed to improve young people's achievement of the four key life outcomes:

- Employment and further education
- Living independently
- Having friends and relationships and being able to participate in the local community
- The best health possible

5 key messages

Wakefield aims to enable young people with SEND to achieve their ambitions and prepare for adulthood with high aspirations in areas such as employment, independent living, community participation, productivity, and health and wellbeing.

- **Personalise your approach** - develop a personalised approach to all aspects of support using person centred practices and building communities.
- **Develop a shared vision** - improving life chances with young people, families and all key partners.

- **Improve post-16 options and support** - develop post-16 options and support that lead to employment, independent living, good health, friends, relationships and community inclusion.
- **Raise aspirations** - raise aspirations for a fulfilling adult life, by sharing clear information about what has already worked for others.
- **Being supported towards greater independence and employability** can be life transforming for children and young people with SEN. This support needs to start early and should centre around the child or young person's own aspirations, interests and needs.

5 Day Offer

The Preparing for Adulthood Team also facilitate the 5 Day Offer for young people in Post 16 education with an EHCP. Those who have moved to a 3 day education provision and require support in supplementing their education with provision to support their transition into adulthood. This could be accessing the community, work placements or volunteer opportunities all to support with an effective transition into adulthood.

Support from a 5 Day Officer can be requested through the Local Offer, where a referral form can be found. The 5 Day Offer support will be bespoke to each young person, and will be for up to a period of 6 months. Please contact the team to discuss referral criteria if you are unsure.

The 5 Day Officers also support specialist provisions and colleges in providing advice for young people with regards to making the appropriate choice for their 'next steps' that are in line with their interests and aspirations.

Contact Details:

You can contact the **Preparing for Adulthood Team** by emailing: [**SENDPFA@wakefield.gov.uk**](mailto:SENDPFA@wakefield.gov.uk)

Or

See the '**Preparing for Adulthood**' section on the Local Offer.

Education

Education Welfare Service

School attendance

Enforcing school attendance is the main role of the Education Welfare Service, but in practice Education Welfare Officers (EWOs) will work closely with schools and families in an attempt to avoid legal measures.

It is recognised that the causes of irregular school attendance can be varied and complex and in some cases EWOs will undertake an important role in other related areas of work which may have a bearing on school attendance.

Education Welfare Officers will not undertake the role of a legal advocate.

Education Welfare Officers will:

- Encourage parents to visit the school and discuss any concerns
- Offer support and advice on a variety of educational matters
- Make parents aware of their legal responsibilities
- Assess areas of difficulty and bridge any gap between home and school
- Interpret particular situations and needs to the school
- Work with the Common Assessment Framework (CAF) and Child Protection Process to support children where appropriate

Irregular school attendance is usually associated with a range of personal problems experienced by the child or family concerned. The role of the Education Welfare Officer is to:

- Identify, in conjunction with schools, cases of irregular school attendance which necessitate further action
- Assess the circumstances which have led to the breakdown of school attendance and identify causes and other significant factors which can assist in resolving the problems

- Assist schools in the interpretation and use of attendance data through closer analysis and monitoring
- Analyse the extent and incidence of intermittent and persistent absence. Plan appropriate action in conjunction with the school, appropriate agencies, the child and the family
- Implement action plans to support the child and family in overcoming their difficulties with irregular school attendance, often done through the CAF process
- Take court proceedings on behalf of the local authority

Contact Details:

Email: [**ews@wakefield.gov.uk**](mailto:ews@wakefield.gov.uk)

Telephone: **01924 307451**

Please send enquires to the following mailboxes:

General enquiries: [**ews@wakefield.gov.uk**](mailto:ews@wakefield.gov.uk)

Children Missing Education enquiries: [**educationcme@wakefield.gov.uk**](mailto:educationcme@wakefield.gov.uk)

The Education Welfare Service works with Schools and Academies to provide support to children, young people and their families in connection with school attendance and accessing education.

Support to families can take a range of forms including proactive support, individual work, advice and guidance, and in extreme cases legal action.

The Education Welfare Service also has a responsibility for monitoring children missing from education, elective home education, child employment and entertainment licences.

The Education Welfare Service has a range of statutory and discretionary responsibilities. Not all services may be available in Academies as the same responsibilities do not always apply.

Health & Care

In this section you will find information for the following services:

Service	Page number
Child & Adolescent Mental Health Service (CAMHS)	36–37
Children’s Occupational Therapy	38–39
Children’s Speech and Language Therapy	40–41
Children’s Physiotherapy	42–43
Children’s Therapy Autism Assessment Service	44–45
Complex Care Needs Team	46–49
Short Breaks Assessment Team	50–51
Family Hubs and the Team around Early Years	52–53
Family Hubs and the Team around School	54–55
Transitions Team	56–57
Parent/Carer Support/Advice	58–59



Health

Child & Adolescent Mental Health Service (CAMHS)

CAMHS are the NHS services that assess and treat young people aged up to 18 years old with emotional, behavioural, or mental health difficulties.

There are five teams in Wakefield CAMHS:

Primary intervention team – providing consultation and training to local services, as well as short-term treatment for mild and moderate mental health difficulties.

CAMHS core team – providing assessment and treatment for severe or complex mental health difficulties.

Eating disorder team – providing assessment and treatment for diagnosed eating disorders.

Enhanced outreach team – providing assessment and treatment for young people who have experience of being in local authority care, and are experiencing mental health difficulties.

ReACH team (previously crisis team) – providing assessment and time-limited intensive interventions for young people experiencing emergency, urgent, or intense mental health difficulties.

Who is it for: Children, young people, parents and carers

Ages: Children and young people up to 18 years

Contact details:

If you're a professional, young person aged 16 to 17, or a parent or carer of a child or young person under the age of 18, you can contact the Wakefield CAMHS Single Point of Access (SPA) team directly to request further support.

Please note that a child or young person must be registered with a GP practice in Wakefield to access support from Wakefield CAMHS.

Website: [www.southwestyorkshire.nhs.uk/ services/camhs-wakefield](http://www.southwestyorkshire.nhs.uk/services/camhs-wakefield)

Telephone: **01977 735865**

Wakefield CAMHS SPA team

Monday to Friday 9:00am – 5:00pm

CAMHS ReACH team

Monday to Sunday 9:00am – 8:00pm

Other information:

Wakefield CAMHS have developed a bank of information and resources, including downloadable workbooks, leaflets, and materials, on a range of mental health and wellbeing topics.

Website: www.southwestyorkshire.nhs.uk/wakefield-camhs-resources

Health

Children's Occupational Therapy

The Children's Occupational Therapy Team provides a service to children from birth to 19 years of age (if in full time education) who reside or attend school in the Wakefield area.

Our aim is to provide assessment and therapy to children whose ability to play, participate in the school day and self care is affected by illness, disability or other specific developmental difficulty. Our role also extends to making recommendations about the physical management and environment that is needed for our client group in order to increase independence whilst reducing demand on care givers.

Service provision takes place in the ward, occupational therapy department, local children's centres, mainstream and special schools or nursery and the child's home. We work closely with colleagues in health, education and Social Services.

Conditions treated

The service is available for all children whose functional development is affected by either an acute or chronic condition. Consequently we are required to have a broad knowledge base of both conditions affecting childhood and effective interventions.

Our assessments are designed to meet the presenting needs of the child and frequently fit within a neurodevelopmental or biomechanical framework. Through discussion with the child, young person and parents, client centred goals are identified. An individual treatment plan is then designed to meet achievable goals for the child or carer within current service provision.

Referral criteria

Referrals are accepted for children with functional needs through the child's consultant, GP or school medical officer. If the children or young people have been seen previously they can self refer back into the service. The child's level of need for the service is discussed and the child may be placed on our waiting list. Children must reside or attend school in the Wakefield district.

Contact details:

The teams are based in the individual Children's Centres within Pinderfields Hospital and Pontefract Hospital. The centres comprise of Children's Outpatients and the Therapy Services.

Children's Therapy Services

Pinderfields Hospital

Telephone: **01924 541411**

Pontefract Hospital

Telephone: **01977 747180**

Health

Children's Speech and Language Therapy

Children's Speech and Language Therapy helps children with a range of Speech, Language and Communication Needs (SLCN) to achieve and maintain their potential. It provides support and advice to families and those working with children.

Children may present with:

- Delayed or disordered language development
- Speech sound difficulties
- Stammering
- Voice disorders
- Social communication difficulties/Autism
- Severe Learning Difficulties
- Physical disabilities, e.g. cerebral palsy
- Hearing impairment
- Maxilla-facial disorders such as cleft palate
- Feeding and Swallowing difficulties

A Speech & Language Therapist can assess and advise regarding a child's speech, language and communication development. Therapists are trained to advise and support children with SLCN and their families.

Our Speech and Language Therapists will help parents/carer's become more confident in supporting their child's speech, language, communication or feeding and swallowing needs.

Drop in sessions:

Walk in for Talking - drop in sessions

If there are concerns around a child's speech, language or communication development, parent/carers can come along to one of our regular 'Walk-in for Talking' drop-in sessions where children can be seen without an appointment.

We will be able to offer the family advice and, if needed, refer into the service for a more in-depth assessment at one of our 'Initial Assessment Clinics'.

Please contact **Children's Speech and Language Therapy** on **01977 465417** to book an appointment.

Contact details:

Children's Speech and Language Therapy team

Telephone: **01977 465417** (Monday-Friday, 9.00am - 4.00pm)



Health

Children's Physiotherapy

A Children's Physiotherapist has expertise knowledge of childhood development, movement patterns, and a wide range of clinical conditions.

We work closely with the child, young person and their families to formulate individual treatment programmes in order to achieve their maximum potential.

Our staff are registered with the Health Professions Council (HPC) and have Enhanced CRB checks. We are all members of the Chartered Society of Physiotherapy (CSP) and of its professional network, the Association of Paediatric Chartered Physiotherapists (APCP).

The service we provide:

We are a highly specialised team of chartered Children's Physiotherapists who are able to assess, diagnose and offer treatment for a variety of musculoskeletal conditions affecting babies, children and young adults up to 17 years of age.

Our Pre 5 therapy service offers assessment and advice to children under the age of 5 in regards to concerns surrounding their physical development. Referrals may be allocated to a specialist clinic or a physiotherapist working in the geographical area where they live.

Mainstream Schools

This is a service to children with a physical disability aged over 5-18 who attend a mainstream school or college. We work with other professionals, families, education staff and the child to meet their needs.

Children's Ward

As a physiotherapy service we cover the ward and A and E / Children's Unit if needed. Our primary role on the ward is to assess as an inpatient and give respiratory care to those that require it. We liaise closely with Occupational therapists for mobility and functional assessments if required post discharge. As well as patients who have had surgery, we assess and treat patients with respiratory conditions.

Contact details:

Children's Therapy Services

Pinderfields Hospital

Telephone: **01924 541 411**

Pontefract Hospital

Telephone: **01977 747180**

Health

Children's Therapy Autism Assessment Service

The Children's Therapy Autism Assessment service at Mid Yorkshire Hospitals assesses children and young people aged up to 18 years old.

If a parent thinks that their child may have Autism, they will need to fill out a social communication assessment referral form.

The referral form has two sections; one to be filled out by parents/carers and one to be filled out by professionals who have contact with your child (this can be education, social workers, portage, health visitors or child minders).

In this clinic the paediatrician will complete a detailed birth and developmental history, and also exclude other possible causes for altered behaviours. If the Paediatrician thinks Autism could explain your child's differences, then your referral will be progressed onto the Multi-Disciplinary Assessment (MDA) team.

The onward assessment will include different professionals depending on the presentation of your child. Assessment is completed based on need.

The MDA team consists of:

Speech and Language Therapists – for assessment of your child's social communication skills.

Occupational Therapists – for assessment of your child’s functional abilities, including their movement patterns and sensory processing needs.

Clinical Psychologists – for assessment of your child’s social and emotional development.

ASD Co-ordinators – Either Assistant Psychologist, or Assistant Speech and Language Therapists that may complete aspects of an assessment or gather additional information from you or school if needed.

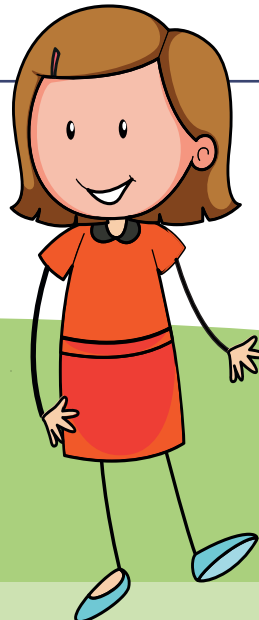
Contact details:

The team can be contacted daily between 8.30am - 4pm.

Children’s Centre, Pinderfields Hospital/ Pontefract Hospital Children’s Therapies Gate 3A Aberford Road, Wakefield WF1 4DG

Telephone: **01924 541411**

Email: **midyorks.asccoordinators@nhs.net**



Care

Complex Care Needs Team

The Complex Care Needs Team is a social care team who work with children aged 0-18 with complex health and disabilities.

The team work with children in need, children subject to child protection plans and children who are subject to care proceedings. They endeavour to ensure that all children receive the right level of intervention at the right time, to improve outcomes for them. This includes assessments which enable provision to be organised, that supports the family in meeting the needs of children with profound and multiple learning disabilities and very complex medical needs.

Eligibility for referral to the children's complex care needs service:

The children's complex care needs service provides support for children and young people where:

- The disability or complex health need has a substantial and long-term effect on their ability to carry out day-to-day activities; and
- There are significant difficulties in meeting needs within their family, broader support networks or through local universal provision.

Definitions Whilst eligibility decisions are based on individual need and professional judgement, including to what extent the impairment affects their lives and the lives of those who live with and care for them, it is likely that the child or young person will fit into one or more of the following definitions:

- A significant, permanent and enduring physical disability;
- A significant global learning disability;
- A severe and enduring communication disorder;
- Autism with a significant global development delay and may have challenging behaviour; and / or a significant sensory impairment;
- A chronic or life threatening condition.

Contact details:

An Initial Contact is made where the Children and Young People Service is contacted about a child, who may be a Child in Need, and where there is a request for general advice, information or a service.

All contacts need to be considered alongside the Multi-Agency Continuum of Need - Supporting Children, Young People and Families (Wakefield Safeguarding Children Partnership) and/or Early Help criteria.

Where there is an emergency about the safety of a child and they are in immediate danger the police should be contacted on **999** without delay.

Care

Complex Care Needs Team

Everybody has a responsibility to share concerns about a child when it is believed or suspected they:

- Have suffered significant harm and/or;
- Are likely to suffer significant harm and/or;
- Have developmental and welfare needs which are likely only to be met through the provision of family support services (with agreement of the child's parent(s))

If you believe the situation is urgent but there is no immediate danger, please call **0345 8503 503** in the first instance to speak to the Integrated Front Door.

As part of this discussion the Integrated Front Door will advise on the next steps to take and as to whether a **Multi-Agency Referral Form (MARF)** should be completed and submitted to:

social_care_direct_children@wakefield.gov.uk

Should your call be outside of business hours (Monday – Thursday, 8.30am – 5pm and Friday 8.30am – 4.30pm) please still call **0345 8503 503** to speak to the Emergency Duty Team. Please note, the Emergency Duty Team operate an emergency only service, non-emergency contacts will need to be made on the next working day.



Care

Short Breaks Assessment Team

Short Breaks Assessment Team complete assessments for children and young people from 0-18 years old with SEND.

Short Break Assessments are holistic and enable families and carers to continue to provide care and supports children with disabilities to be fully part of their family.

Short breaks are services provided to children with special educational needs and/or disabilities (SEND) to support them to experience things that other children do, at home and in their community.

Short breaks services also enable family carers to continue to provide the care that enables children with disabilities to be fully part of their families.

A short break can be:

- Accessible fun activities in the community
- Support to access fun activities in the community
- Day time or overnight care in the home or elsewhere
- Services to help carers in the evenings, at weekends and during the school holidays

Who can access specialist short breaks

To access Specialist Short Breaks, families will need an assessment of need for care and support to access Specialist Short Breaks. This is completed by the Short Breaks Assessment Team and Complex Care Needs Team.

It is only possible to know if a child, young person or parent/carer is eligible for a Specialist Short Break by first completing an assessment of need that looks in detail at three areas:

- Child's needs and development
- Parent/carer's needs
- Family and environment

To decide eligibility, the parent/carer needs and family/environment factors are looked at together to see overall what level of support is needed. The same is done for the child's needs.

It is the combination of these levels of support needed that is used to decide if someone is eligible for a Specialist Short Break.

Contact details:

If you are a practitioner working with a family who would like to access Short Breaks and would like information about how to do this, please contact by email: sendshort-breaks@wakefield.gov.uk.

Care

Family Hubs and Team around the Early Years (TAEY)

Family Hubs are a one-stop shop that parent, carers, and young people can walk-in, email or telephone to access whole family support.

Parents/carers can also ask for early help from the child's nursery, childminder or health visitor and request a Team around the Early Years' (TAEY) meeting.

The TAEY is an offer of early help to families that brings together a team of professionals to help the family to access support when they find it hard to cope with the demands of family life.

The child's nursery, childminder or health visitor will be the families first point of contact to talk through the areas they would like help with. They will complete a referral form.

This form will be shared with a core groups of professionals from early help, education and health - plus professionals who are specialists in a specific area of work - who will then work together to identify the best package of support for the family.

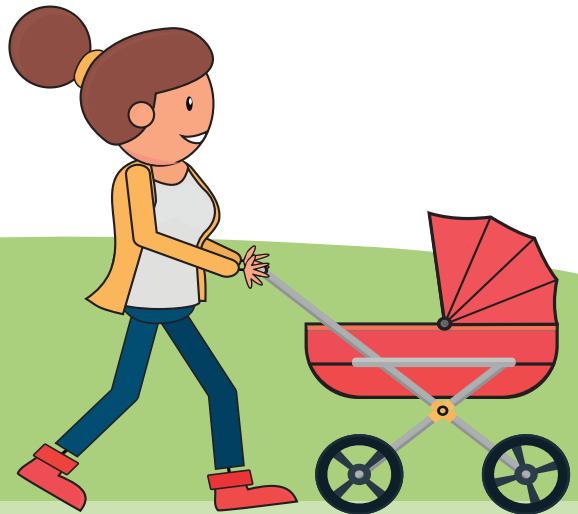
A family support plan will be developed with the family. This will set out who will be working with the family on different support areas they've asked for help with. This could include building a network of support from people they know, attending an intervention programme as part of a group activity or 1:1 sessions, or attending activities and events as a family in the local community.

If at any stage, the family no longer feel they need or want this support, they can talk to the child's nursery, childminder, health visitor or local Family Hub and withdraw from the support available.

You can find your nearest Family Hub by visiting:
www.wakefieldfamilies.together.co.uk

The childcare provider will:

- Explain options of support available from different partner services
- Agree the support the family would like to access
- Support the family to make links with the services who will be leading on the work with the family.



Care

Family Hubs and the Team around School (TAS)

Family Hubs are a one-stop shop that parent, carers, and young people can walk-in, email or telephone to access whole family support.

Parents/carers can also ask for early help from the child's school and request a Team around the School (TAS) meeting.

The TAS is an offer of early help to families that brings together a team of professionals to help the family to access support when they find it hard to cope with the demands of family life.

The child's school will be the families first point of contact to talk through the areas they would like help with. They will complete a referral form.

This form will be shared with a core groups of professionals from early help, education and health - plus professionals who are specialists in a specific area of work - who will then work together to identify the best package of support for the family.

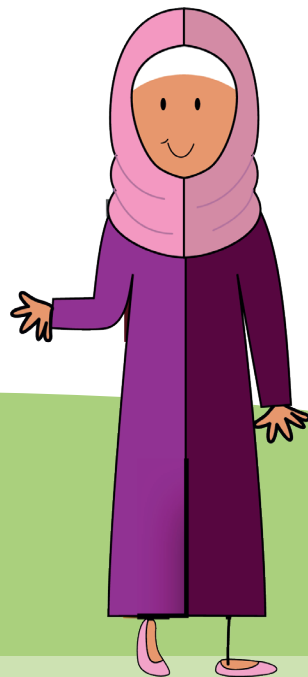
A family support plan will be developed with the family. This will set out who will be working with the family on different support areas that they've asked for help with. This could include building a network of support from people they know, attending an intervention programme as part of a group activity or 1:1 sessions, or attending activities and events as a family in the local community.

If at any stage, the family no longer feel they need or want this support, they can talk to the child's nursery, childminder, health visitor or local Family Hub and withdraw from the support available.

You can find your nearest Family Hub by visiting:
www.wakefieldfamilies.together.co.uk

The childcare provider will:

- Explain options of support available from different partner services
- Agree the support the family would like to access
- Support the family to make links with the services who will be leading on the work with the family.



Adult Social Care

Transitions Team

The Transitions Team of social care professionals sits within the Community Team for Learning Disabilities East (CTLD East). The Team works district wide with young people with an Education Health and Care Plan (EHCP) who are transitioning from Children's to adult services.

The team support young people from 16 years, or earlier if required, through to the age at which they leave full time education. They will complete a strengths based assessment, which will determine whether the young person is likely to have eligible care and support needs under the Care Act when they turn 18 years, and the outcomes they want to achieve in life.

The Transitions worker will consider what support might be of benefit at that point, and also consider whether other options beyond formal services might help the young person achieve their desired outcomes. The young person and their carer will be provided with advice and information, including what is available locally to meet needs.

The best time for the assessment is often around the age of 17 years, however this can be completed at the most appropriate time for the young person, and will be prior to their 18th birthday.

The young person will always be at the centre of the assessments taking into account their thoughts, feelings, aspirations and wishes for the future.

The team also supports parents and carers of young people in their caring role and to have a better life.

Young people who are eligible for adult social care will be offered an individual budget which may be taken in the form of a direct payment, Individual service fund, a personal health budget, a managed account or a mixture of these. A financial assessment will determine the appropriate client contribution to services.

The Transitions worker will also be able to ensure that any necessary referrals are made to adult health services, e.g. the Wakefield Adult Learning Disability Health Service, or Wakefield Adults Mental Health Services. A referral to the ICB for a Continuing Healthcare assessment will also be made if appropriate.

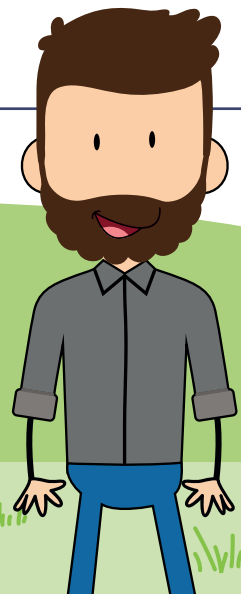
The Mental Capacity Act 2005 also applies to all young people from the age of 16 years, and needs to be considered throughout the transition process. During transitions a series of important decisions affecting a young person will have to be made. For some individuals, due to their disability or complex care needs they may lack the capacity to be able to make such decisions. The Transitions worker will work alongside the young person, their family / carer and other professionals to guide and assist with this process if it is required.

Contact details:

A referral can be made to the Transitions Team by contacting Social Care Direct:

Telephone: **0345 8 503 503**

Email: **Social_Care_Direct@wakefield.gov.uk**

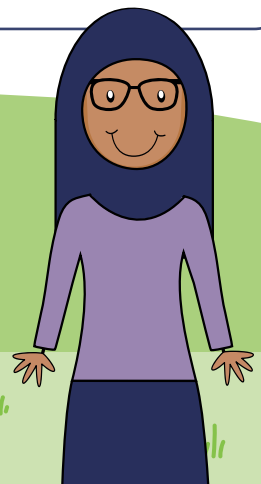


Parent/Carer Support/Advice

Wakefield Early Support, Advice, Information and Liaison (WESAIL)

provides a free, confidential and impartial service.

- WESAIL provide information, advice, support and signposting according to need.
- WESAIL offers information covering a range of matters relating to Special Educational Needs and/or Disabilities (SEND) including education, health, social care, personalisation, personal budgets.
- The aim of the WESAIL service is to support children, young people, their parents, carers and families. The team provide information to navigate systems and processes, to empower and enable them to play an active role in decision making about matters relating or their children's health, education, social care support.
- Referrals for support can be made by telephone or directly to the service by young people, parents or carers, or someone working with the family where the parent/carer or young person has given consent.
- WESAIL is also responsible for updating the Local Offer and engaging with children, young people, families and stakeholders in its ongoing development and review.
- The Local Offer provides information about the services, activities and support available in the local area for children and young people with Special Educational Needs and /or Disabilities and their families.



WESAIL

WESAIL engages with young people, families and stakeholders to update the Local Offer.

Contact details:

Telephone: **01924 965588**

Email: wesail@family-action.org.uk

Wakefield Parent Carer Forum

Wakefield Parent Carer Forum is an independent parent carer forum who work with families of children with special educational needs and/or disability, aged 0-25 years old, living in the Wakefield area.

The forum is led by a group of local parents who listen to, and represent the views of parents, young people and children.

The forum work in partnership with service commissioners and providers through participation and co-production to make a positive difference and improve the quality of life for all children and families in Wakefield.

Contact details:

Email: info@wakefieldparentcarers.co.uk

Website: www.wakefieldparentcarers.co.uk

Unit 2, Airedale Business Centre, Kershaw Avenue, Castleford WF10 3ES

